

# FOODPRINT MELBOURNE



## INQUIRY 6

How can Melbourne's foodbowl ensure a reliable food supply in future?

## DATA SHEET 8

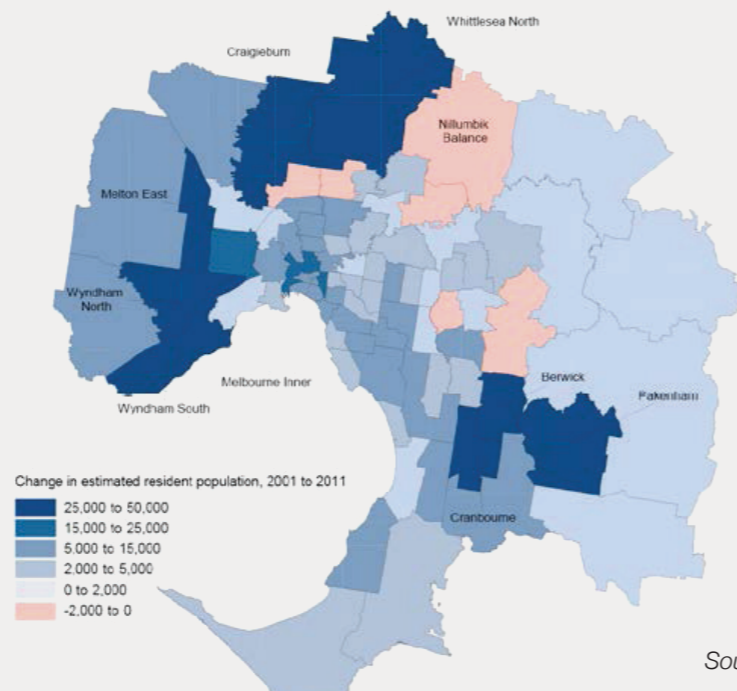
Use to complete Worksheet 8

PAGE 1 of 2

**FIGURE 1: THE GROWTH OF MELBOURNE 1911-2016**

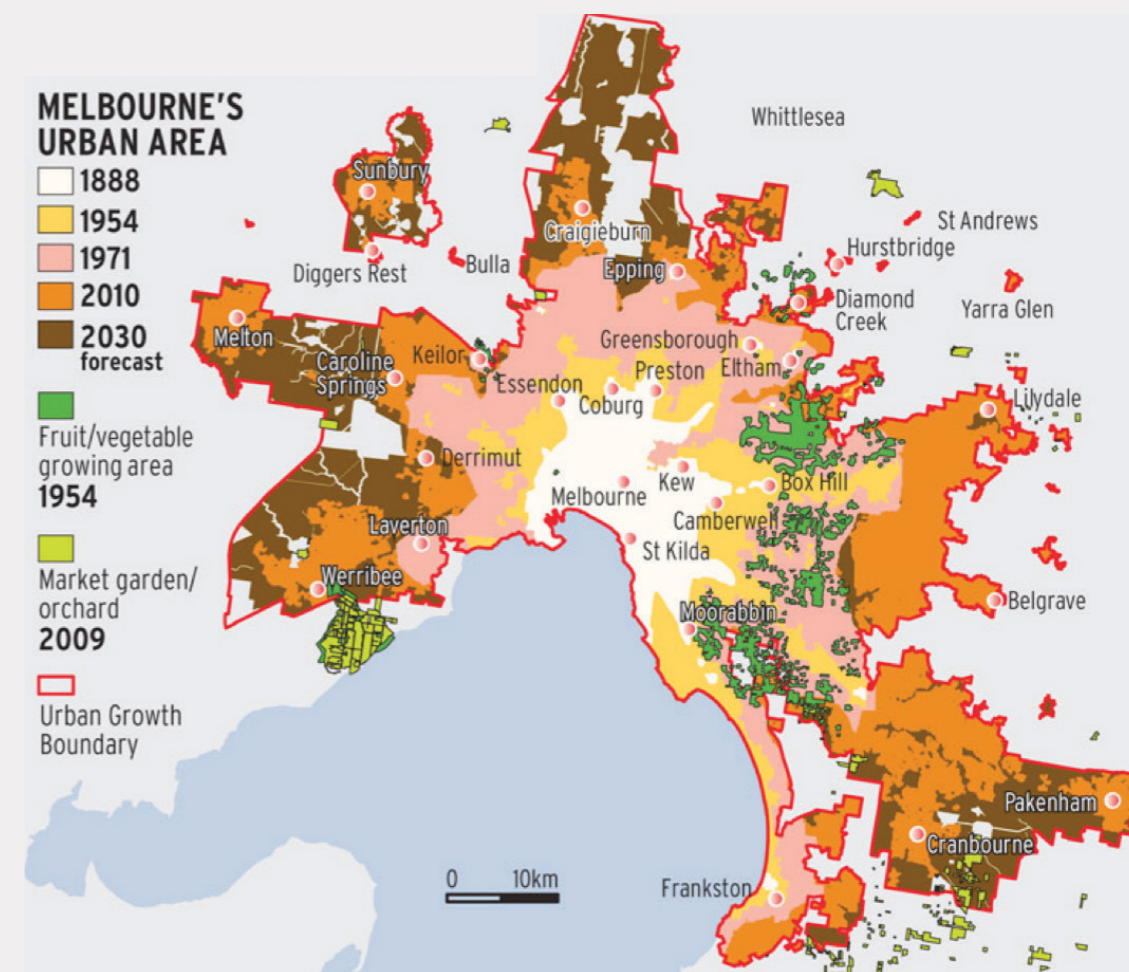
YEAR	MELBOURNE'S POPULATION
1911	588 971
1921	766 465
1933	991 934
1947	1 226 409
1954	1 524 062
1961	1 912 055
1971	2 503 450
1981	2 722 817
1991	3 194 707
2001	3 500 249
2011	4 169 366
2016	4 485 211

**FIGURE 2: POPULATION CHANGE FOR STATISTICAL LOCAL AREAS, MELBOURNE, 2001-2011**



Source: BITRE

**FIGURE 3: GROWING OVER OUR FOOD**



Source: Spatial Vision

# FOODPRINT MELBOURNE



## INQUIRY 6

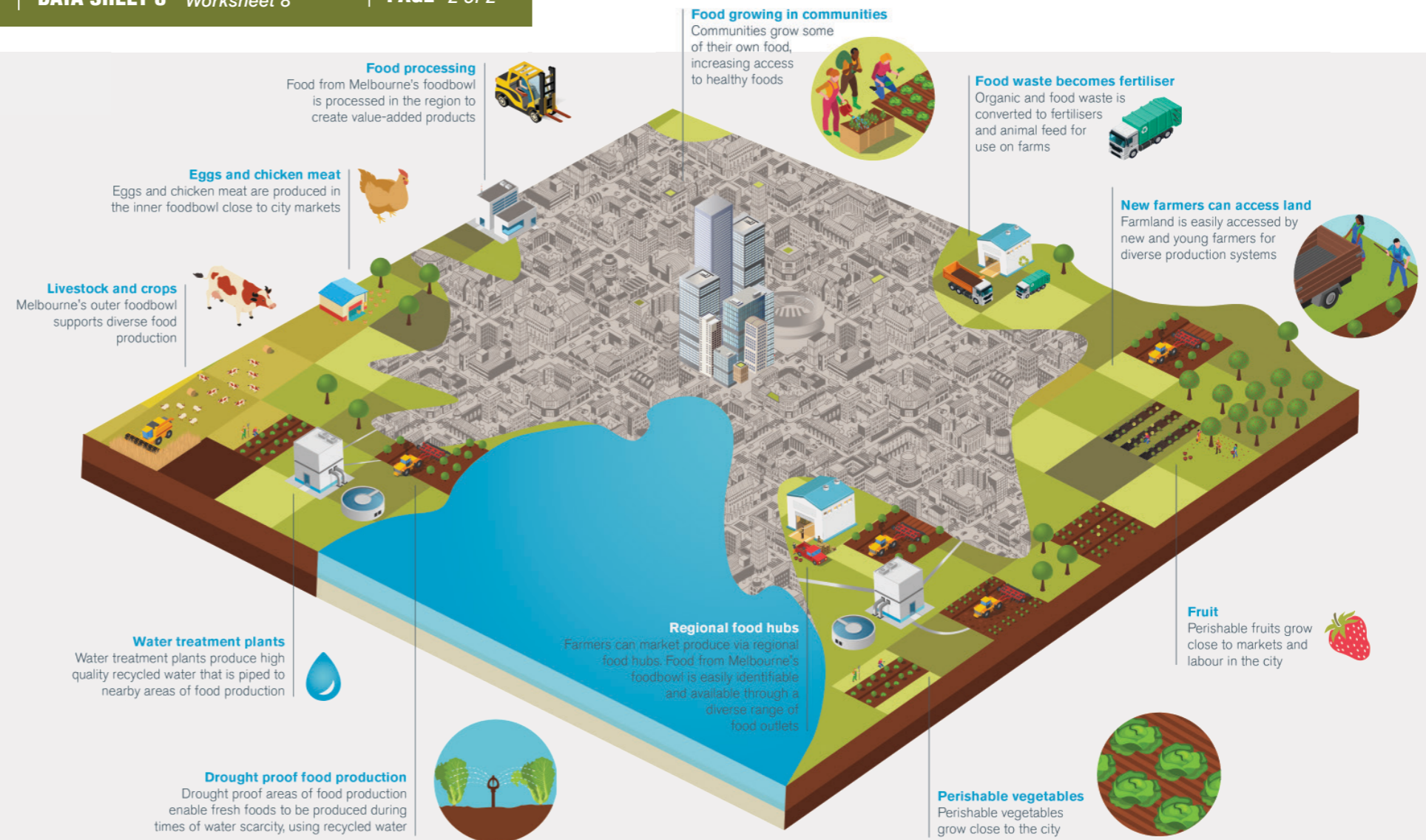
How can Melbourne's foodbowl ensure a reliable food supply in future?

## DATA SHEET 8

Use to complete Worksheet 8

PAGE 2 of 2

**FIGURE 4: A RESILIENT CITY FOODBOWL FOR MELBOURNE**



**FIGURE 5: A COMMUNITY GARDEN IN MELBOURNE**



Source: Little Veggie Patch Company