

# Wildlife Health Surveillance Victoria

November 2012

We investigate reports of sick & dead wildlife from free ranging populations in Victoria to understand baseline wildlife health & detect changes. This is important because wildlife health can affect biodiversity conservation & ecosystem health, & can interact with biosecurity & the health of domestic animals & people.

**Please contact us to report sick and dead wildlife from free ranging populations of mammals, birds, reptiles and amphibians in Victoria.**

**Pam Whiteley 0400 119 301 [pamw@unimelb.edu.au](mailto:pamw@unimelb.edu.au)**

**Platypus.** We want to examine dead platypus to determine the cause of death and collect samples for toxicological tests.

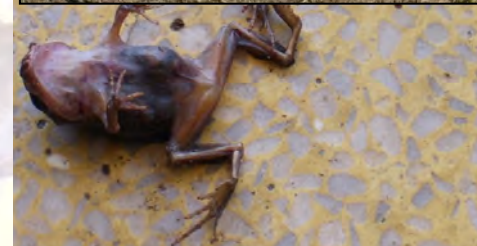
**Kangaroos and Wallabies.** We are keen to investigate reports of incoordinated, wobbly or apparently blind macropods. Kangaroo blindness virus is spread by midges. Phalaris staggers from pasture, and toxoplasmosis (from cat faeces) are other possible causes of incoordination and death. Eye and nasal discharge, sneezing and tail twitching have also been reported. If you see kangaroos or wallabies with any of these signs of disease, please contact us.

**Parrots, cockatoos and lorikeets** can have beak & feather disease caused by circovirus. We need more information about bird species infected, the distribution and virus strains.

**Botulism in wetlands.** If you see dead, weak, or partially paralysed water birds over summer, please let us know. These deaths could be due to botulinum toxin, produced by bacteria that can persist in the environment.

**Frog deaths** have been reported after rain, possibly due to chemical toxicity. Chytrid fungus infections are also important causes of frog deaths and population declines. We can test for these.

**Samples can be transported overnight for investigation.**



Please contact Pam Whiteley 0400 119 301 [pamw@unimelb.edu.au](mailto:pamw@unimelb.edu.au) (97312000)

**[Wildlife Health Surveillance Victoria](#) (Google website)**

Faculty of Veterinary Science, The University of Melbourne, 250 Princess Highway, Werribee, Vic 3030. (Donations are tax deductible.)