

We investigate reports of sick & dead wildlife from free ranging populations in Victoria to understand baseline health, detect changes & identify risk factors. This is important because wildlife health can affect biodiversity conservation & ecosystem health, & can interact with biosecurity & the health of people & domestic animals; One Health.

If you see wildlife from free ranging populations with any of these signs of disease, please contact us. We can ship carcasses to Werribee overnight for investigation.

Kangaroos & Wallabies.

- **Eastern grey kangaroo sub adults.** (photo) Weakness & death in high density populations due to an intestinal blood-sucking worm, *Globocephaloides trifidospicularis*.
- Incoordinated, wobbly or apparently blind macropods can be due to Kangaroo blindness virus, phalaris staggers from pasture, toxoplasmosis from cat faeces etc.
- Eye & nasal discharge, sneezing & tail twitching. Herpes viruses have been identified.
- Bony lumps on legs.



King parrots. (photo)

- Morbidity & mortality during winter. Possibly due to intestinal protozoa, *Spironucleosis spp.*



Crimson rosellas.

- Mortality & morbidity during winter.

Parrot & cockatoos.

- Beak & feather disease.

Long billed Corellas.

- Morbidity & mortality was reported & *Chlamydophila spp* detected.

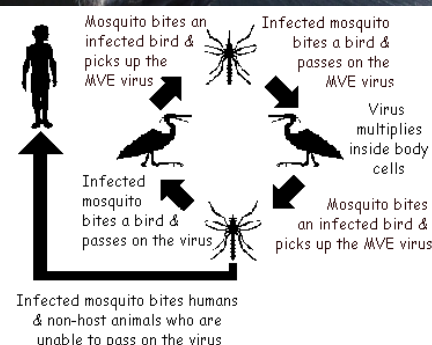
Koalas.

- **Mange** (photo). Scuffy skin above feet, on sternum and face.
- **Kidney disease.** Please send us clin-path reports of urine & blood.
- Deaths: *Chlamydophila spp* have been detected.



Wildlife serum

- **Arboviruses antibodies.** (diagram) Please collect serum from all wildlife, including waterbirds (especially herons, cormorants etc) for Murray Valley encephalitis etc.
- We also want to test dead nestlings.
- Small volumes of blood can be collected onto filter paper. Contact us.



Please contact Pam Whiteley

0400 119 301 pamw@unimelb.edu.au or Dr Beveridge 97312000

Faculty of Veterinary Science, The University of Melbourne,
250 Princes Hwy, Werribee, Vic 3030.

This is a collaborative project. We gratefully acknowledge support from the Hermon Slade Foundation.